

SMART CUT™ 8001 Precision Diamond Saw



Made in U.S.A.

www.ukam.com/diamond_saws.htm

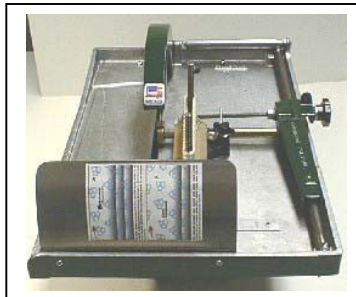
Best Performance & Price Diamond Saw

Fast & Precision sectioning of printed circuit boards, ceramic substrates, electronic packages, and many other materials. Coolant is stored below and applied to sample by rotating the blade. Saw table has a **large working area** measuring **12" x 18"** has no inhibiting lip. Bull dog grip vise holds all material shapes and swings back out of the way for hand sectioning.



Cross feed slabs for 3 1/2". Just pull the vise back and set to scale to get the slab thickness you want. Hold down hook (patent pending) runs under table top so rock can't climb the blade or jam. Front shield protects operator from cutting waste. Arbor has 5/8" diameter steel shaft.

Ball bearing assembly has grit slinger to protect precision bearings. Twin drains allow quick and easy cleaning of **Koolerant** sump. Piggy back motor mounts directly on back tank casting. Unit rests on rubber cushions for quiet operation.



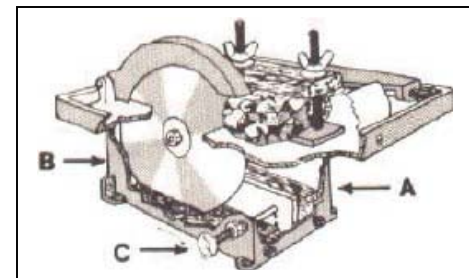
Features:

- Cast aluminum table top & tank
- 3 3/4" Roller bearing slab vise with bull dog grip
- Accurate cross feed adjustment
- Hold down hook keeps rock from climbing blade
- Adjustable blade guard
- Motor (optional)
- Power feed
- Adjustable blade guard accepts 7", 8", and 9" Blades
- Clear Molded Plexiglass Hood
- Deluxe Power Feed

Technical Information:

- Motor: 1/3 HP 110V, H.D. Motor
- Sample working area 12" x 18"
- Blade Range: 7", 8", and 9" Diameter
- Arbor: 5/8"
- Fluid Capacity: 1 quart
- Dimensions: 19" x 14" x 13"
- Shipping Weight: 35 lb

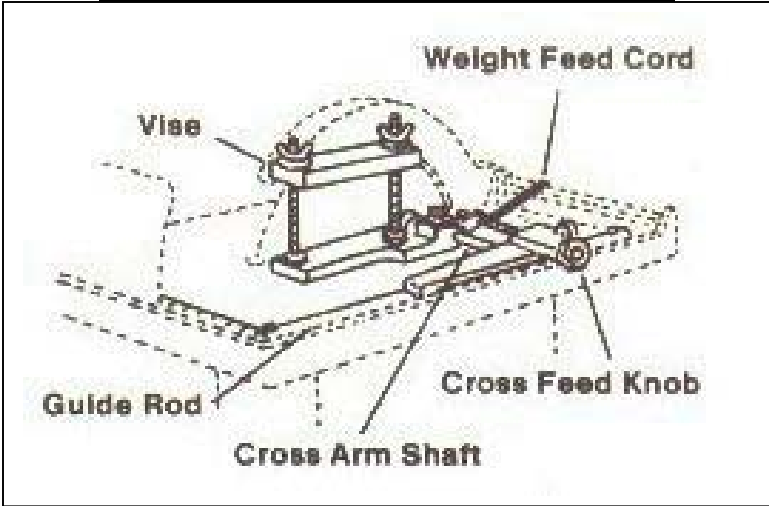
Koolerant Coolant System



Koolerant Control virtually eliminates splash. Valve "C" adjusts flow from reservoir "A" into blade compartment "B" to maintain proper level. Excess Koolerant from cutting area is returned to the reservoir.

ACCESSORIES

Deluxe Saw Vise & Automatic Feed



Vise jaws take a 3 3/4" high specimen and will hold the work piece without blocks or shims. Cross feed will adjust up to 3 1/2" before sample must be repositioned in vise. The end of the cross arm shaft has a "no bind" roller bearing and hook which ensures a smooth feed and prevents samples from "riding up" the blade. Parts include vise assemble, cross arm shaft, cross feed and knob, weight feed cord and scales.

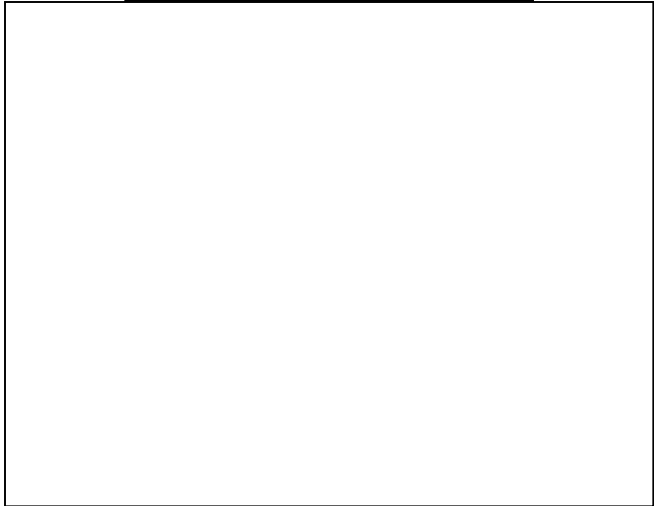


FREE



SMART CUT 8001 Precision Diamond Saw comes with (1) one FREE Precision Diamond Blade 8" x .032" x 5/8"-1/2". Sintered (metal bond) wit 7mm Height of Diamond

Saw Plexiglass Cover



Clear molded Plexiglas hood for use with **SMART CUT™ 8001** saws. Roomy hand holes in each side allow plenty of room for free cutting movement. Hood fits inside trim saw table edge and simply sets in place. No holes to drill. Shipping weight 5 lbs.



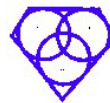
NEW GENERATION AND TECHNOLOGY!!!

Precision Diamond Wafering Blades (METAL BOND) - SMART CUT

Will work on just about any material. 1 blade can substitute any diamond, abrasive, or carbide blade. Guaranteed improvement in overall performance. **Save up to 650%**



Continuous Rim

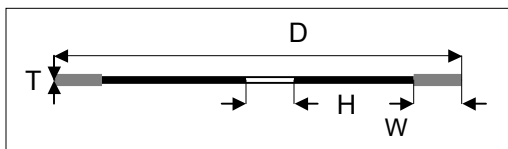


Different Product
Different Company
Different Technology

SMART CUT technology

Precision Diamond Blade (Metal Bonded)

SMART CUT precision sintered (metal bonded) diamond wafering blades are the highest overall performance blades available today. Manufactured utilizing **SMART CUT** technology, will work on almost any material, substituting many other blades. You can't find a better value on the market. **SMART CUT** series precision diamond wafering blades will give you consistent results you can count on everyday.



Application

Plastic, very soft metals + Non-ferrous soft metals + Very ductile metals (Ti) Soft ferrous metals + Medium soft ferrous metals + Medium hard ferrous metals Hard ferrous metals + Very hard ferrous metals + Extremely hard ferrous metals + Sintered carbides Hard ceramics + Minerals and ceramics

Used on:

Sectioning saws
Abrasive cut-off saws
Surface Grinders
And other equipment

It's time you Expect

MORE from your tools

ADVANTAGES

Item #	Diameter	Rim Width	Rim Depth
23-4670W	4" (101.6mm)	.014" (0.35mm)	.20" (5mm)
23-4671W	4" (101.6mm)	.020" (0.5mm)	.20" (5mm)
23-4673W	6" (152.4mm)	.014" (0.35mm)	.20" (5mm)
23-4674W	6" (152.4mm)	.020" (0.5mm)	.276" (7mm)
23-4675W	6" (152.4mm)	.032" (0.8mm)	.276" (7mm)
23-4678W	8" (203.2mm)	.025" (0.6mm)	.276" (7mm)
23-4679W	8" (203.2mm)	.032" (0.8mm)	.276" (7mm)
23-4711W	10" (254mm)	.032" (0.8mm)	.276" (7mm)
23-4712W	10" (254mm)	.040" (1.0mm)	.276" (7mm)
23-4716W	12" (300mm)	.0512" (1.3mm)	.276" (7mm)
23-4717W	14" (350mm)	.0512" (1.3mm)	.276" (7mm)
23-4718W	16" (400mm)	.0512" (1.0mm)	.276" (7mm)

Other diamond wafering blade sizes from **0.5" to 72" Diameter** are available. Starting from **.001" Thick**.

Standard arbor sizes:

1/2", 5/8", 3/4", 1", 1-1/4", 2.75"

we can make any arbor size (inside diameter) you want.

- + More Universal
- + More Aggressive
- + Cuts Faster
- + Cuts Smoother
- + Lasts Longer
- + Minimal Chipping
- + More Precision
- + Straight Cut
- + Heat Resistant
- + Easier to Use
- + NO oil (no contamination)
- + Minimal Dressing
- + **SAVE MONEY!!!**

All sizes are in stock and ready for same day delivery.

Other sizes are available upon request. Please check for availability.

Prices are F.O.B. Valencia, CA.

References and letters of recommendation are available upon request.

Guarantee: 100% Quality and Satisfaction is Guaranteed

Price Matching: we will be any competitors price for the same type and quality product.

www.ukam.com/metallographic_diamond_blades.htm



UKAM Industrial Superhard Tools Division of LEL Diamond Tools International, Inc.

25345 Avenue Stanford Unit 211, Valencia, CA 91355 – tel (661) 257-2288 – fax (661) 257-3833

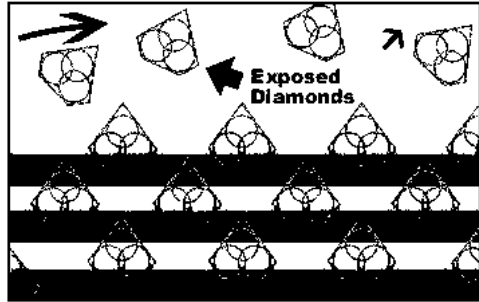
SMART CUT™

ADVANCED TECHNOLOGY
THAT REDEFINES
THE STANDARD
IN CUTTING

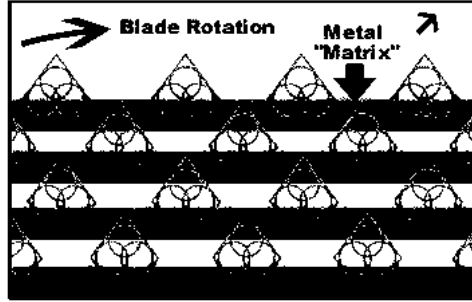
**Diamonds Oriented
In Matrix**

How Smart Cut Works?

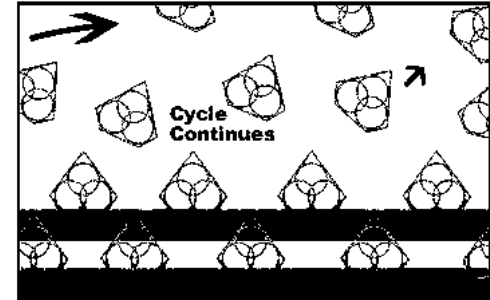
The sharpest and finest quality DeBeers diamonds that go into a Smart Cut Diamond Bond, immediately penetrate into the material, grinding and polishing as they cut.



The newly exposed diamonds don't effect diamonds already working on the material. Unlike many other diamond bonds, diamonds in a Smart Cut remain sharp and grow sharper with each cut. Prolonging product life and consistent performance.



Diamonds are activated only at the exposed layer. As diamonds layer begin to wear out, diamonds in a new diamond layer are immediately activated, substituting the already used up diamond layer. The Smart Cut Diamond Bond makes sure every diamond is in the right place and at the right time, working where you need it most.



This advanced formulated open diamond bond design insures minimal chipping, fast cut, constant speed of cut, minimal cutting noise, and most important of all minimal loss of precious material.

SMART CUT Difference

That's the difference you get out of every **SMART CUT™** product. The difference you can't see, but you will feel and highly appreciate.

= RESULTS

NEWS RELEASE

Date: October 16, 2000

For immediate release

UKAM Industrial Superhard Tools, Division of LEL Diamond Tools International, Inc. has recently introduced **SMART CUT** technology, a new breakthrough in manufacturing precision diamond wafering blades. The company maintains this technology will redefine the standard in cutting.

This technology allows us to properly position and orient the diamond inside the metal matrix. Making sure every diamond is in the right place and at the right time, working where you need it most. (Please, see diagram)

This technology has also allowed us to develop a NEW GENERATION (hybrid) diamond bond matrix. In a **SMART CUT** diamond bond you will find all the advantages of cutting speed and smoothness that you have come to expect in a resin bond, and unique characteristics of a metal bond in terms of life, aggressiveness, durability, and excellent performance on you look for in a metal bond.

maximum cutting performance – each diamond works like a small horse. Diamonds come in contact with the material in the right place and at the right time, working where you need them most. You get the maximum use out of diamond and bond.

no glazing – blade requires minimum dressing, the bond renews itself

faster cutting action - Diamond wafering blades manufactured utilizing this technology are much more aggressive than your conventional blades. They cut faster, still leaving behind a smooth finish.

more universal - These diamond blades are designed to work on practically any material you can find, You can cut very hard materials, than switch to cutting soft materials and the blade will still maintain the same consistent performance.

superior coolant system - these blades are designed to cut with or without oil. We feel it is more preferable to the user to use water as a coolant. Oil does not a proper coolant for this procedure, as most other manufacturers would suggest. Water is a true organic coolant, witch does not leave the specimen being cut oily or contaminated.

www.ukam.com/metallographic_case_studies.htm

25345 Avenue Stanford Unit 211 Valencia, CA 91355 Tel: (661) 257-2288 Fax: (661) 257-3833

THE NEXT
GENERATION

OF PRECISION

DIAMOND

WAFERING BLADES

SMART CUT™



UKAM Industrial Superhard Tools is one of the largest precision diamond tool manufacturers in the U.S. and Europe. We offer

- Technical Support
- Application Assistance
- Real value and savings

With over 50 years of experience in manufacturing, research, and development. Following the belief "that there is always room for improvement", we continue to raise standards for the whole industry.

Largest inventory in the U.S. With over 4,000 diamond wafering blades, you are sure to find the solution you are looking for in stock and ready for same day delivery. If you are not using these blades, you are paying too much.

HOW TO ORDER



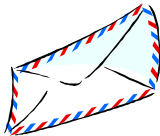
Order by Phone:

Call: (661) 257-2288 Monday through Friday 8:00 a.m. to 5:30 p.m.



Order by Fax:

Fax: (661) 257-3833, available 24 hours a day.



Order by Mail:

send your orders to: 25345 Avenue Stanford, Unit 211 Valencia, CA 91355 U.S.A.

please include product item number, description, and payment.

Accepted forms of payment



We accept Visa, Mastercard, and American Express. California Residents add 8.25% sales tax.

Guarantee: The quality of our products are 100% guaranteed.

International Orders

Mail, fax, or e-mail orders to UKAM Industrial Superhard Tools. A confirmation of receipt will be forwarded to buyer immediately. If a confirmation of receipt is not received, buyer should resubmit

the purchase order to UKAM Industrial Superhard Tools in order to insure processing of the order. UKAM Industrial Superhard Tools will calculate and fax or e-mail the subtotal of the merchandise and comparison shipping charges when the order is prepared to be shipped. Buyer should then choose the preferred means of shipping, add shipping costs to the subtotal of estimate and notify UKAM Industrial Superhard Tools by phone, fax, or e-mail, regarding preferred shipping and chosen method of payment.

Whatever your goal or objective

UKAM Industrial can help you get there faster.

Largest Inventory & Selection

with over 2,000 different types & specifications of precision diamond products available from inventory. You are sure to find what you are looking for in stock and ready for same day delivery.

- Over 4,000 Precision Diamond Blades in stock
- Over 1,000 Diamond Drills & Drilling Accessories in stock
- Hundreds of Diamond Dicing Blades in stock

If we don't have it in stock. Chances are no body will. Call: (6 6 1) 2 5 7 - 2 2 8 8

Manufacturers Direct Prices

SMART CUT precision diamond products offer the best value & performance. In most cases UKAM Industrial Superhard Tools can meet and beat a competitors price on products of same quality & performance. If you are not using one of our products, chances are you are paying to much.

Research and Development

UKAM Industrial Superhard Tools has over 50 years of experience in manufacturing, research, and development of new and advanced technologies to keep up with your increasing challenges.

Technical Support

We are committed to helping you improve and optimize your cutting and drilling operation to the outmost level of efficiency. If you have a special application, that requires a custom solution. Send us a piece of your material, and we will analyze it in our laboratory and design a bond formulation for your particular requirement.

You can rely on us and our group of authorized application engineers to assist you in your cutting requirements, answer any questions, and provide you with the personal attention you deserve. Please, feel free to contact our Technical Support Team at Phone: (661) 257-2288 from Monday to Friday 8:00 to 6:00 p.m. PST.

Incredible Value

UKAM Industrial Superhard Tools offers you real value and savings. Our Precision Diamond Products manufactured utilizing **SMART CUT** technology will

- save you money
- save you time
- save you material
- improve overall performance

Try a precision Diamond Product with SMART CUT technology TODAY!!!

Custom Manufacturing

Can't find what you are looking for? Let us know. We can manufacture it for you or redesign our products to better fit your needs, standards, specifications, and requests.

New Generation & Technology

UKAM Industrial Superhard Tools is a LEADER in developing new products. We are constantly engaged in Research & Development to better meet your needs and expectations. And continue to raise standards for the whole industry. With UKAM you can rest assured you're getting the latest, cutting edge products you deserve.